



Echo Court 37 Marine Crescent Ilford, IG6 2FL

Edward Chase is delighted to present to the residential lettings market this brand new 2-bedroom apartment located on the door step of Hainault Station (Central Line). This brand-new development has recently been completed via Taylor Wimpey tailoring a bespoke apartment on the first floor with tones of modern features making this apartment ideal for professional couples or small families. This property has many key aspects such as: - Gas central heating - Double glazing - Large balcony - Hainault Station - Local amenities and schools - Two bedrooms - Tiled master bathroom - White goods including dishwasher - Open plan reception - Storage - Combination boiler - Available unfurnished To view this property please call Edward Chase today. Lettings Edward Chase estate agents offer a bespoke, professional, ARLA accredited Lettings & Management service. Edward Chase has client money protection (CMP) in place through the PropertyMark, scheme reference



- Brand New Build
- Tiled Bathroom
- Furnished or Unfurnished
- Superb Location
- 2 Bedroom Apartment
- Open Plan
- Hainault Station (Central Line)
- Storage

Monthly Rental Of £1,249

Echo Court 37 Marine Crescent Ilford, IG6 2FL

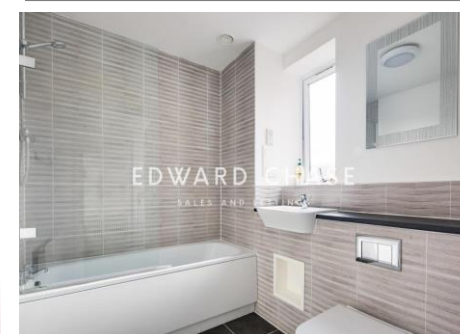
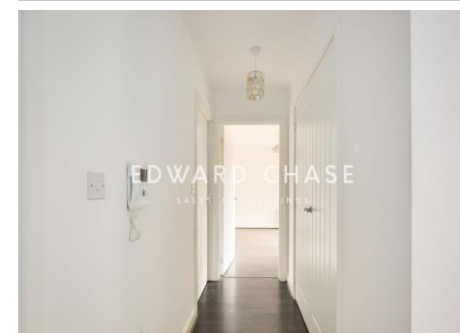
Monthly Rental Of £1,249

Edward Chase is delighted to present to the residential lettings market this brand new 2-bedroom apartment located on the door step of Hainault Station (Central Line). This brand-new development has recently been completed via Taylor Wimpey tailoring a bespoke apartment on the first floor with tones of modern features making this apartment ideal for professional couples or small families. This property has many key aspects such as:

- Gas central heating
- Double glazing
- Large balcony
- Hainault Station
- Local amenities and schools
- Two bedrooms
- Tiled master bathroom
- White goods including dishwasher
- Open plan reception
- Storage
- Combination boiler
- Available unfurnished

To view this property please call Edward Chase today. Lettings Edward Chase estate agents offer a bespoke, professional, ARLA accredited Lettings & Management service. Edward Chase has client money protection (CMP) in place through the PropertyMark, scheme reference C0129032. If you would like a free

property appraisal to gauge the rental potential of your property or you are considering a buy to let purchase, please feel free to contact Sukhbir Basra, Branch Manager to arrange an appointment. Edward Chase estate agents specialize in Ilford, Redbridge, Seven Kings, Goodmayes, Chadwell Heath, Newbury Park, Barkingside, Chadwell Heath, Barking, Canary Wharf, Romford, Dagenham, Newham, Royal Wharf and the surrounding East London vicinity.



Score	Energy rating	Current	Potential
92+	A		
81-91	B	83 B	83 B
69-80	C		
55-68	D		
39-54	E		
21-38	F		
1-20	G		

MONEY LAUNDERING REGULATIONS 2003

Intending purchasers will be asked to produce identification and proof of financial status when an offer is received. We would ask for your co-operation in order that there will be no delay in agreeing the sale.